

# Taranaki Enviroschools

## Panui - Koanga – Term 4, 2014

### In this Issue...

#### What's happening now...

- ✓ Enviroschools Nationwide census
- ✓ Curriculum planning – weave with Enviroschools 2015

#### What has been happening...

- ✓ Mapping for change at Ahititi
- ✓ Hawera Primary enviro visionaries
- ✓ Biodiversity Mapping
- ✓ National Energiser Hui

#### What's coming up...

- ✓ Cluster Hui – census support
- ✓ Conservation Week
- ✓ Rotokare – precious resource
- ✓ Sustainable events calendar

Kia ora koutou and welcome to the spring edition of the Taranaki Enviroschools newsletter.

Spring is a great time to leap into enviro-action as the days get longer and warmer!

Term Four sees the launch of a nationwide Enviroschools census – the first one ever. Find out the details in the “what’s happening now” section below and keep your eye on your inbox and post box!

We know you are also starting to think about 2015 at this stage and we would love to help you find further ways to weave in Enviroschools learning for next year. Invite Donna to your curriculum planning session and get a head start – more details on page 2.

There is some fantastic thinking and planning taking place in local Enviroschools, so check out what has been happening at Ahititi and Hawera Primary.

As always, we love contributions to the newsletter so please send a quick update and a few photos so we can celebrate the fantastic things that are happening in enviroschools in Taranaki!

Enjoy the last term of the year!  
Nga mihi, Donna and Rachel





# What's happening now...

## First ever nationwide Enviroschools census

### **It is happening in term 4 this year and your help is needed!**

There are now nearly 1000 schools and early childhood centres that are part of the Enviroschools network – wow! For the first time ever, The Enviroschools Foundation is able to carry out a nationwide census of the actions and outcomes that are happening in and across our network. This is thanks to the funding the Foundation has from the Ministry for the Environment.

Our region is fully behind this important survey, which has been extensively trialled. We are able to provide support to help schools complete the survey, and the first opportunity is via our upcoming cluster hui in New Plymouth and Stratford/South Taranaki. Please check the dates below, in 'What's coming up' and let us know the best options for you!

Jan Cox, National Manager - Enviroschools Programme, will be in touch with each school and ECE centre as the surveys are being sent out in Term 4.

## Curriculum planning – weave with Enviroschools

As the end of the year nears and planning sessions for 2015 are being set; it's a good time to consider how Enviroschools action and student-led inquiry can be incorporated into overarching topics and themes, daily learning and routines.

We would love to help weave the kaupapa in any of your planning sessions. Donna picked up lots of tricks and tips while working in a Silver enviroschool in Auckland, and she LOVES planning. So invite us along and we can collaborate on a plan of attack that will enable you to hit the ground running with Enviroschools action for 2015!

To take advantage of this offer please email  
[donna@hivetaranaki.co.nz](mailto:donna@hivetaranaki.co.nz)





# What's been happening ...



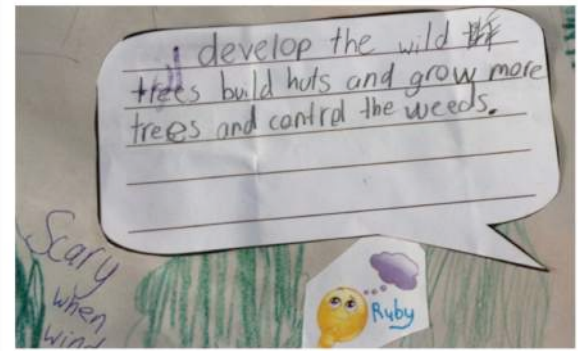
## Mapping for change at Ahititi

The students at Ahititi School have been busy thinking about their action-filled Enviroschools journey so far and planning how they can make further changes to make their school more sustainable.

They created maps of their kura and then identified how they felt about different places in their school, the places they enjoyed and the places they felt they could improve.

'Thinking faces' and ideas for change were added to the map, culminating in a list of possible actions they could take. The school then conducted an enviro-survey to get an even wider view of their school's sustainability journey and added further ideas to their possible projects table.

Ka pai Ahititi! We look forward to seeing what happens next!



## Hawera Primary eco-visionaries

Students, teachers and community members have all been involved in contributing ideas for change at Hawera Primary.

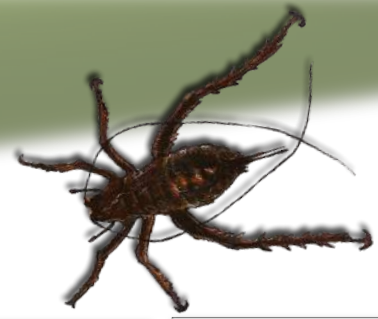
Donna and Rachel from Enviroschools, and Sara Knowles from Health Promoting Schools, spent a fun afternoon with a group of enthusiastic students bringing together all of these ideas into a school vision map.

It is great to see the breadth and depth of ideas for sustainability that have been generated and how keen the students are to collate this into an overall vision!

Having a shared vision is key to ensuring that Enviroschools kaupapa is owned and shared by everyone in the community. It's always a good idea to have a map to see where you are heading!



## Biodiversity mapping at Toko



Toko students recently became eco-scientists as they discovered the biodiversity that exists in their school yard.

Assisted by Melissa from Rotokare, and armed with binoculars, I-pads, magnifying glasses and identification guides, they investigated the range of wildlife that shares their school environment. From the feathered flying variety to creepy crawlies – the students observed and recorded what they saw.

They set tracking tunnels to find out what other visitors and inhabitants they might have! Melissa helped them analyse their data results and think about what this means for their planting plans going forward.

This biodiversity mapping programme fits in wonderfully with the class' plans to create a 'bird supermarket' – one of their goals since attending the Pukeiti event in March this year.



## National Enviroschools Hui

**Being part of an amazing nation-wide sustainability jigsaw!**

The National Enviroschools hui held over 3 days at Saint Peters of Cambridge, a green-gold enviroschool, was a rewarding and inspiring experience.

Nearly 150 teachers, facilitators and educators attended focused workshops around engaging and educating students towards a sustainable future.

It was a valuable time for networking and building collaborative relationships and motivating to see ourselves as pieces of the nation-wide jigsaw that we are all part of!







# What's coming up?...

## Term Four Cluster Hui – census support

**Save  
the  
Date**



This term at our cluster hui in New Plymouth and in Stratford/South Taranaki we are going to be focussing on the **enviroschools census**, arriving in the mail soon. We will also use the census as a reflection/goal-setting/support-needs discussion tool, and celebrate the end of a successful 2014 school year. We have a couple of potential dates for each hui, so if you haven't already, please let us know which is your preference so we can go for the date that suits most of you!

Stratford/South Taranaki  
potential dates  
Friday 31<sup>st</sup> October  
OR  
Friday 7<sup>th</sup> November

New Plymouth potential dates  
Tuesday 28<sup>th</sup> October  
OR  
Thursday 6<sup>th</sup> November  
OR  
Tuesday 11<sup>th</sup> November

## Conservation Week 1 – 9 November 2014



Get your students out exploring their backyard this Conservation Week and encourage them to discover the world where they live.

Connect them to their local places, species and taonga. Spark their imagination because there's an amazing world right on your doorstep.

There are a range of activities you can do both in and out of classroom.

Check out the website below to see how you can be involved and discover some resources to support you.

<http://www.doc.govt.nz/getting-involved/events-and-awards/conservation-week/>



## Rotokare – a precious resource

### Rotokare EE Programme Teacher Open Days

Weeks 6 – 7, Term 4, 2014

#### Sessions

**Primary School Teachers**, will be invited to come out to Rotokare, inspect the facilities we have and also have a go at a selection of the different units and associated activities we offer.

**Secondary School Teachers**, will be invited to specific sessions looking at subject areas and NCEA achievement objectives we offer

- Social science Y9-10 programme
- Science Y9-10 programme
- Science Y11-13 programme
- Education for Sustainability options

- Times and exact days of sessions to be advised.
- Teachers are encouraged to ring or email to RSVP and select a session. [educator@rotokare.org.nz](mailto:educator@rotokare.org.nz)

## Artistic Adaptations

Rotokare and the Govett Brewster educators have teamed up to create a unique, fun and hands on LEOTC programme. Students will learn about the amazing adaptations of plants and animals and explore their knowledge through art. Art created by students could be used in a fundraising art auction for the Rotokare Scenic Reserve Trust.



Term 1 and 2, 2015

GOVETT-BREWSTER  
ART GALLERY



Book Now!

- [educator@rotokare.org.nz](mailto:educator@rotokare.org.nz) 06 764 8500
- [chrisb@govettbrewster.co.nz](mailto:chrisb@govettbrewster.co.nz) 06 759 6060



## Sustainable events calendar

The Hive Taranaki Environment Centre sends out a sustainable events calendar each month. There are some amazing initiatives happening in our region. If you are not on the mailing list and you would like to be, please click on the link <http://tinyurl.com/oylvqh2> to ensure you can be kept in the sustainable loop! Here is the link to the latest October update - <http://tinyurl.com/ko6jqo3>.

*That is all from us for now. Don't forget to email us with your preferred dates for the upcoming cluster hui and we look forward to working together with you on the upcoming census and during planning sessions. Have an amazing term four!*

Enviroschools is delivered by the Taranaki Environmental Education Trust, made possible by the generous support of:



NEW PLYMOUTH  
DISTRICT COUNCIL  
[newplymouthnz.com](http://newplymouthnz.com)



WOOD GROUP  
PSN

INTERNATIONAL  
VOLUNTEER HQ  
[www.volunteerhq.org](http://www.volunteerhq.org)



Te Putahi Kura Pūhou o Taranaki